

Coagulyzer[®] 100



The flexible solution
for your hemostasis
laboratory



Coagulyzer[®] 100

The Coagulyzer[®] 100 meets the demands of low- to mid-volume hemostasis laboratories. The analyzer is a compact stand-alone solution which has been designed with a clear focus on being user friendly, reliable and cost effective. The Coagulyzer[®] 100 offers an excellent analytical performance for clotting, chromogenic and immunologic assays with a throughput

of up to 100 PT/hour. Analyticon delivers a complete system with reagents, controls and calibrators. The Analyticon parameters PT, APTT, Fibrinogen, Thrombin Time, D-Dimer, Protein C, Protein S and AT III can be measured with the Coagulyzer[®] 100. Other methods are freely editable by the user.

Agile and easy-to-use

- Color touchscreen featuring the intuitive, easy-to-use and straightforward user software
- The Coagulyzer[®] 100 offers a complete solution for both routine and special testing
- Pre-programmed methods for PT, APTT, Fibrinogen, Thrombin Time, D-Dimer, Protein C, AT III and Protein S
- Walk-away automation for up to 22 samples and 10 tests per sample
- Removable reagent tray for overnight cooling of reagents
- Real walk-away time displayed by software

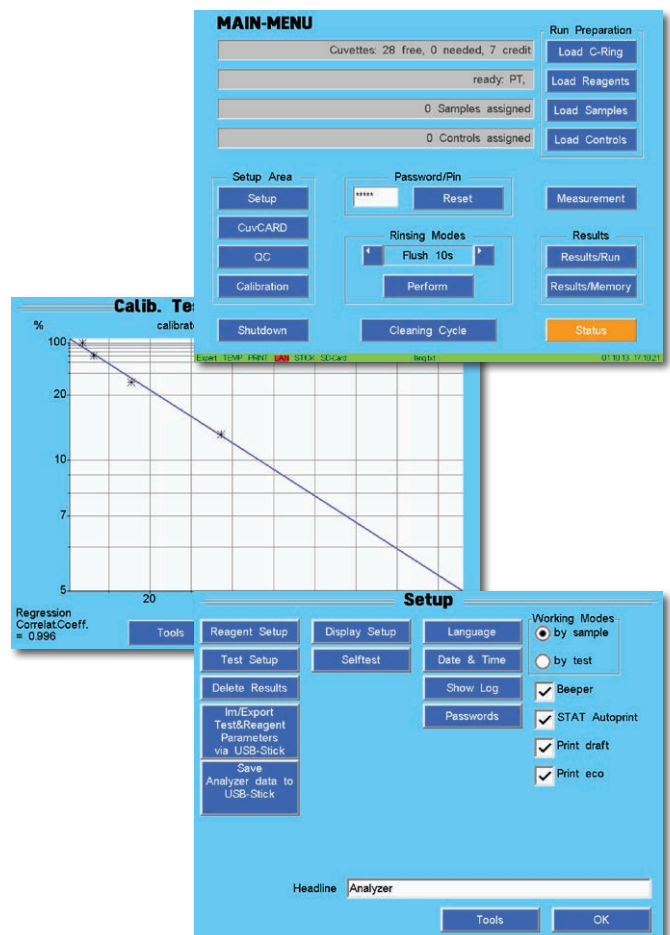


Reliable and accurate

- Accurate and precise results are ensured by additional use of magnetic stirrers to homogenize the test mixture (sample/reagent)
- High-precision pre-heated pipettor (37°C) guarantees reliable and precise distribution of test liquids
- Automated results calculation in %, INR, Ratio, mg/dl, g/l and µg/ml
- Automated dilution of samples (1:50 at 100 µl)
- Auto repeat function
- Minimum risk of carry over due to 4 different intensive wash cycles and use of special washing solution
- Software featuring automated calibration, STAT-program, QC-program and service functions

Efficient and affordable

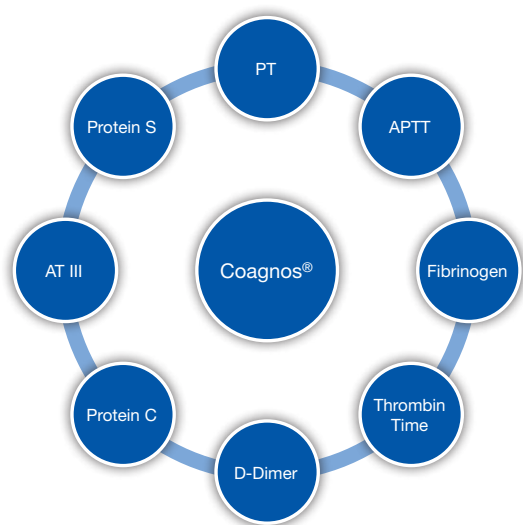
- Single-use cuvette ring (32 cuvettes each, prefilled with stir bars)
- Compact instrument design with a small foot-print saving precious laboratory space
- Up to 10.000 results and curve data can be stored in internal memory
- No external PC is needed to operate the analyzer
- Reduced daily maintenance improves efficiency



Determination	Short information	Art.-No.	Kit size
Coagnos® PT Clot based assay	Liquid stable, rabbit brain tissue factor, ISI value included	CG0301	10x2 ml
		CG0302	10x4 ml
Coagnos® APTT Clot based assay	Liquid stable, Silica activator, CaCl ₂ included in kit	CG0305	10x2 + 10x2 ml
		CG0306	10x4 + 10x4 ml
Coagnos® Fibrinogen Clot based assay	Thrombin: 100 NIH/ml concentrate, calibrator included in kit	CG0310	5x2 + 2x1 + 2x25 + 2x5 ml
Coagnos® Thrombin Time Clot based assay	Bovine thrombin, < 10 NIH units/ml, lyophilized	CG0311	10x1 ml
Coagnos® D-Dimer Immunturbidimetric assay	Liquid stable reagent, calibrator included in kit	CG0380	4x4 + 4x7 + 2x7 + 2x1 ml
Coagnos® Protein C Chromogenic assay	Protein C activation through snake venom	CG0382	6x2 + 6x2 + 3x5 ml
Coagnos® Antithrombin Xa Chromogenic assay	Insensitive to Heparin Cofactor II	CG0381	5x2 + 5x2 + 5x3 ml
Coagnos® Protein S Clot based assay	Suitable for all clot based detection methods	CG0383	2x1 + 2x1 + 2x1 + 1x2 + 1x5 + 1x25 ml
Controls & Calibrators	Short information	Art.-No.	Kit size
Coagnos® Routine Control N	Human plasma, lyophilized	CG0351	10x1 ml
Coagnos® Routine Control P	Human plasma, lyophilized	CG0352	10x1 ml
Coagnos® Special Control N	Pool of citrated plasma, lyophilized	CG0361	10x1 ml
Coagnos® Special Control P	Pool of citrated plasma, lyophilized	CG0362	10x1 ml
Coagnos® D-Dimer Control H/L	D-Dimer enriched human plasma, lyophilized	CG0363	5x1 + 5x1 ml
Coagnos® Calibration Plasma	Pool of citrated plasma, lyophilized*	CG0370	10x1 ml

* can be used for the calibration of Coagnos® Fibrinogen, Coagnos® Protein C, Coagnos® Antithrombin Xa and Coagnos® Protein S

Extended coagulation reagent concept Coagnos®



- Dedicated controls for all parameters
- Validated application settings for all Coagulyzer® instruments
- Routine and special parameters

Specifications

Measuring Principle	Photometric 2-channel LED photometer (405, 570 and 740 nm) with 2 reference channels
Measuring Rotor	32 cuvette rotor
Measuring Temperature	37°C +/- 0.4°C
Test volume	150 µl (max. 300 µl)
Sample positions	2 x 11 sample positions (primary and secondary tubes), additional 3 STAT positions
Sampling	Capacitive pipetting device, moves in 3 directions Pipettor heated at 37 °C, dilutor, 2 – 250 µl (in 1 µl steps)
Reagent positions	15 reagent positions (3 x 15 ml, 12 x 5 ml), 3 stirred Removable reagent tray for overnight cooling, 2 positions for washer & cleaner
Display	Color touchscreen
Interfaces	2 x RS232C / 2 x USB / 1 x LAN (Bi-directional HOST interface) / ChipCARD® reader
External Connections	External printer via USB interface (optional), external barcode scanner via RS232C (optional)
Special Features	Automated result calculation in %, INR, Ratio, mg/dl, g/l and µg/ml Auto repeat function, automated dilution of samples (max. 1:50), QC-Program
Size (WxDxH)	565 x 646 x 310 mm
Weight	25 kg

Consumables

Reagents	Art.-No.	Short information	Kit size
PT recombinant	CG0012	(ISI value included), liquid stable	10x2 ml - 200 tests
Prothrombin time	CG0013	Human recombinant tissue factor	10x4 ml - 400 tests
APTT	CG0021	Soy phospholipids, liquid stable	10x2 ml - 400 tests
Activated partial Thromboplastin Time	CG0022	additionally required: CaCl ₂	10x4 ml - 800 tests
Calcium Chloride	CG0024	0.025 M CaCl ₂	10x4 ml - 800 tests
for determination of APTT			
Fibrinogen	CG0030	quantitative, lyophilized	5x2 + 4x25 + 1x11 ml - 200 tests
Clauss Method			
Consumables	Art.-No.	Short information	Kit size
Control Plasma N	CG0081	normal range, lyophilized	10x1 ml - 200 tests
Control Plasma P	CG0082	abnormal range, lyophilized	10x1 ml - 200 tests
Standard Plasma	CG0090	PT, Fibrinogen, lyophilized	10x1 ml
Cleaning Solution	CG0116		6x12 ml
Washing Solution	CG0117		5x15 ml
Cuvette Ring	CG0114	prefilled with mixer	6x10x32
Sample Cups 4 ml	CG0115		2x250
Teflon Mixer for reagents	CG0118		10 pcs.

Distributor information



Analyticon Biotechnologies AG

Am Muehlenberg 10
35104 Lichtenfels - Germany
Phone: +49 6454 7991-0
info@analyticon-diagnostics.com
www.analyticon-diagnostics.com