

The solution for routine  
urinalysis laboratories



- Process Reliability
- Result Reliability
- Increased Efficiency

## ● Process Reliability

- The Urilyzer® Flex reduces the number of manual working steps and thus sources of error are minimized.
- The results of the urine test strip and the sediment analysis are displayed in a consolidated report and can be transferred directly to the laboratory information system (LIS).

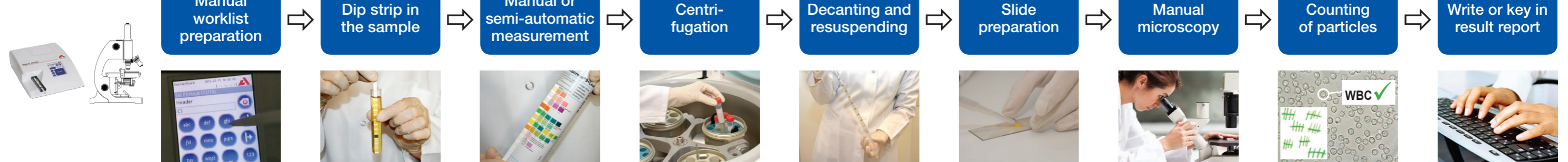
## ● Result Reliability

- The automated sediment analysis leads to a standardization and consequently to an improved comparability of the results.

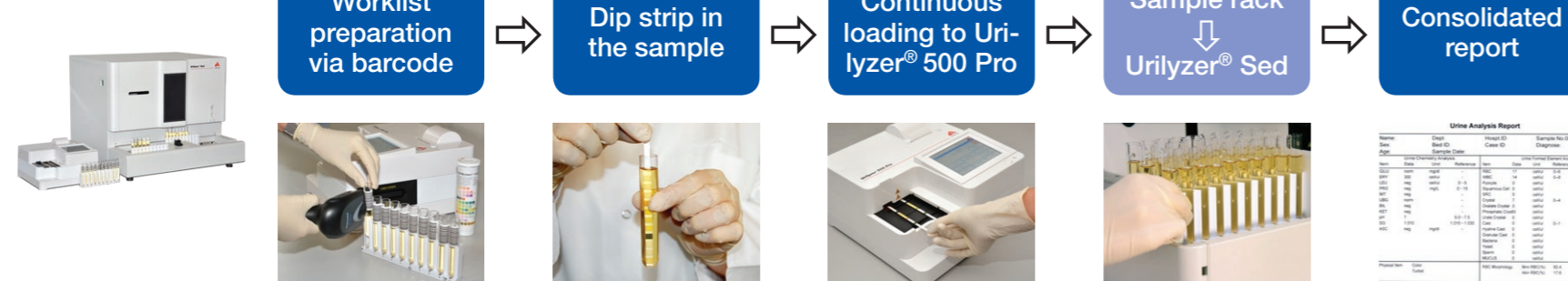
## ● Increased Efficiency

- The workflow is more efficient, as negative samples are sorted out by the Urilyzer® Flex and laboratory personnel is only required for the verification or interpretation of positive samples.

### Ordinary procedure



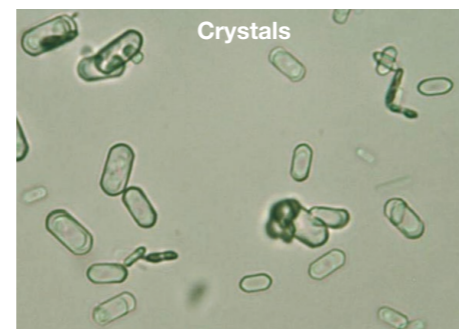
### Urilyzer® Flex



- Ideal for labs with max. 150 sediment and max. 250 chemistry samples per day
- Standardization of sediment analysis
- Consolidated report and/or connection to LIS
- Efficient workflow decreases hands-on



Example images



Urilyzer Flex video on: [www.youtube.com](http://www.youtube.com)

# Specifications

## Urilyzer® Sed

Type	Automated benchtop urine sediment analyzer
Measurement technology	Automated microscopic urine sediment particle analysis in low (LP: 100x) and high power (HP: 400x). Identified and auto-classified particles are presented in whole field of view images (LP and HP) after being sedimented in the counting chamber
Parameters	11 Auto-classified particles: Normal Red Blood Cells, Abnormal Red Blood Cells, White Blood Cells, Casts, Squamous Epithelial Cells, Small Round Epithelial Cells, Epithelial Cells, Yeast, Crystals, Mucus and Bacteria (further particles for sub-classification by user available)  RBC morphological analysis: Histograms with information about size, form and chroma of RBC
Throughput	Up to 90 tests/hour
Data storage	Patient and QC database: > 200.000 tests (with images)
Display	External monitor
Interfaces	Serial RS232, USB, PS2, Ethernet
Dimensions	640 x 680 x 530 mm (WxDxH)
Weight	58 kg
Power supply	100–240 V AC, 50/60 Hz
Operating environment	Temperature: +15°C to +30°C; Relative humidity (non-condensing): 20% to 80%
Printer	External laser printer
Barcode reader	Built-in (optional external); Barcode type: CODE 39, CODE 128, INTERLEAVED 2/5, CODABAR
Protocols	LIS2 (ASTM+)
Features	<ul style="list-style-type: none"> <li>- Counting chamber: Durable with three separate channels</li> <li>- Objective lenses: 10x and 40x magnification</li> <li>- Default no. of images: <ul style="list-style-type: none"> <li>&lt; 200 particles: 10 LP and 10 HP images</li> <li>&gt; 200 particles: 6 LP and 6 HP images</li> </ul> </li> <li>- Loading capacity (samples): up to 50 in one batch</li> <li>- Racks: 10 racks, each with 10 positions</li> <li>- Minimum sample volume: 2 ml (native urine)</li> <li>- Automatic sample mixing</li> <li>- STAT function</li> <li>- Operator Management</li> <li>- Automatic printout or transfer of result</li> <li>- QC Management (full traceability via LOT and Expiry entry)</li> <li>- Flexible reporting options (e.g. different unit types)</li> </ul>

Urilyzer® Sed, Art.-No.: ULS120

## Urilyzer® 500 Pro

Type	Semi-automated urine test strip analyzer with continuous loading
Measurement technology	Reflectance photometer with 4 wavelengths: 505, 530, 620, 660 nm
Parameters	Bilirubin, Urobilinogen, Ketones, Ascorbic Acid, Glucose, Protein (Albumin), Blood (Hemoglobin), pH, Nitrite, Leucocytes, Specific Gravity
Throughput	Up to 500 tests/hour
Data storage	Patient database: 5000 tests / QC database: 5000 tests
Display	5.7" LCD VGA capacitive touchscreen
Interfaces	Serial RS232, USB Type A, USB Type B, PS2 (external keyboard, barcode reader), Ethernet
Dimensions	300 x 300 x 180 mm (WxDxH)
Weight	6.5 kg
Power supply	12 V DC / 5 A
Operating environment	Temperature: +15°C to +30°C Relative humidity (non-condensing): 20% to 80%
Printer	Built-in thermal printer
Barcode Reader	External
Protocols	LIS2 (ASTM+), HL7
Features	<ul style="list-style-type: none"> <li>- Operator Management with advanced system security options</li> <li>- Test strip &amp; QC Management (full traceability via LOT and Expiry entry)</li> <li>- Data Management</li> <li>- Power Management</li> <li>- Autostart of measurement (automatic strip detection)</li> <li>- Automatic printout or transfer of result</li> <li>- Flexible advanced information entry (e.g. sample color and turbidity)</li> <li>- Flexible advanced testing and reporting options (e.g. sediment recommendation flag)</li> <li>- Connection to Urilyzer® Sed possible ⇒ Urilyzer® Flex</li> </ul>

Urilyzer® 500 Pro, Art.-No.: UL0500Pro



### Analyticon Biotechnologies AG

Am Muehlenberg 10  
35104 Lichtenfels - Germany  
Phone: +49 6454 7991-0  
info@analyticon-diagnostics.com  
www.analyticon-diagnostics.com