

Biolyzer[®] 300



The advanced solution for the routine clinical laboratory



- Space-efficient fully automated clinical chemistry analyzer
- Throughput: 270 tests/hour
- Optional ISE unit available, increases throughput to 450 tests/hour

agile - affordable - accurate

Biolzyer® 300

takes clinical chemistry automation a step further. With a throughput of up to 450 tests per hour and 50 refrigerated reagent positions the newest generation of the Biolzyer® systems offers an increased flexibility.

Meeting the demands for precise and reliable results the Biolzyer® 300 is equipped with a number of sophisticated features like high precision sample and reagent pipettors, clot detection and serum indices testing.

Optional extras include a built-in direct ISE module for the detection of Na⁺, K⁺ and Cl⁻ ions as well as high quality long lasting glass cuvettes. The system is operated via a highly intuitive graphic user interface designed with a clear focus on being user-friendly and on facilitating the daily routine laboratory work.

Reliable and accurate

- Separate sample and reagent pipettors avoid carry-over
- Direct heating of the 72 cuvettes
- Levey-Jennings charts, QC statistics and calibration curves
- Serum indices to detect lipaemic, icteric or hemolytic samples

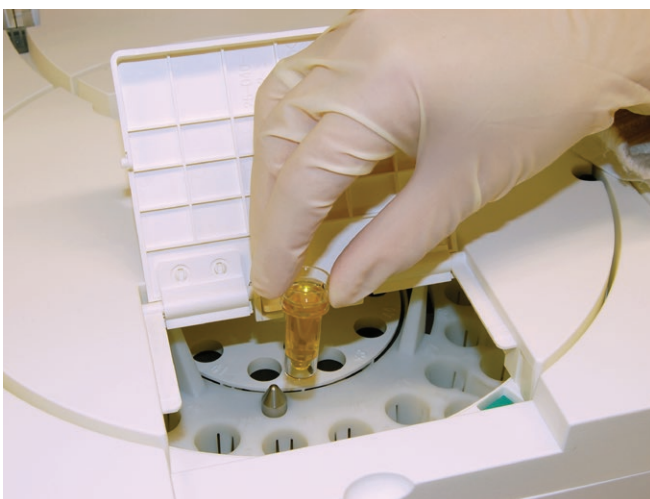
Easy-to-use and agile

- The Biolzyer® 300 features a smart software which is intuitive, easy-to-use and straightforward
- Enables sample dilution and automatic test reruns
- Easy connectivity to LIS
- Auto wake-up function and sleep modus allows automating daily maintenance and preparation before daily routine

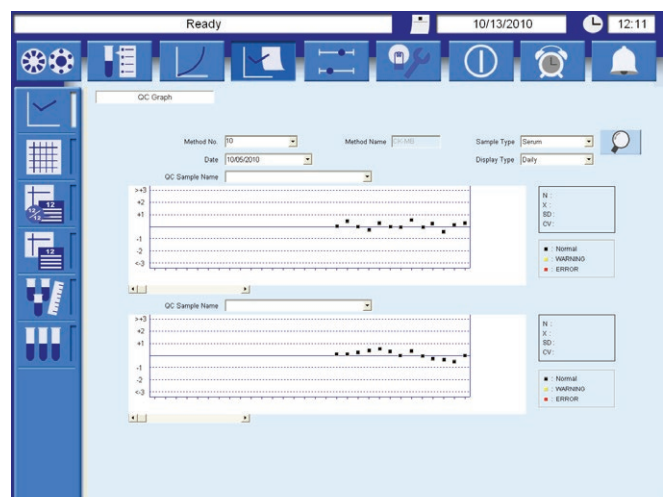
Analyticon provides a complete solution of dedicated reagents, calibrators and controls for the Biolzyer® 300:

Routine Clinical Chemistry, Specific Proteins, Substrates and Enzymes, Lipid Profile, Diabetes, Electrolytes

- STAT function
Dedicated loading port enables fast and easy processing of emergency samples



- Quality control (QC)
QC results are displayed in various formats



1 Refrigerated reagent tray

Removable carousel for easy loading. 50 refrigerated positions to enhance reagent stability.

2 Multi-functional sample tray

40 positions for samples, 10 additional positions for calibrators and controls. Capable of handling primary tubes, sample cups and pediatric cups.

3 Highly precise reagent pipetting system

Liquid level and crash detection.

4 Automatic washing system

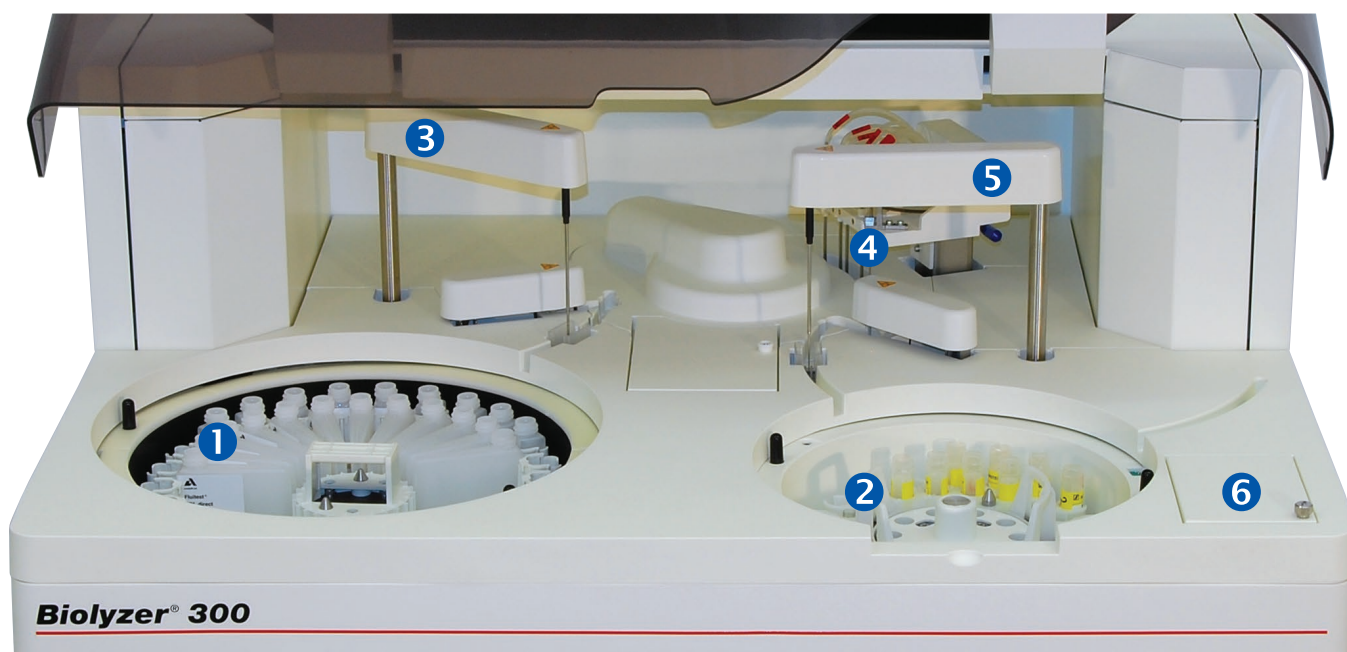
Effective cleaning method minimizes carry over and contamination.

5 Highly precise sample pipetting system

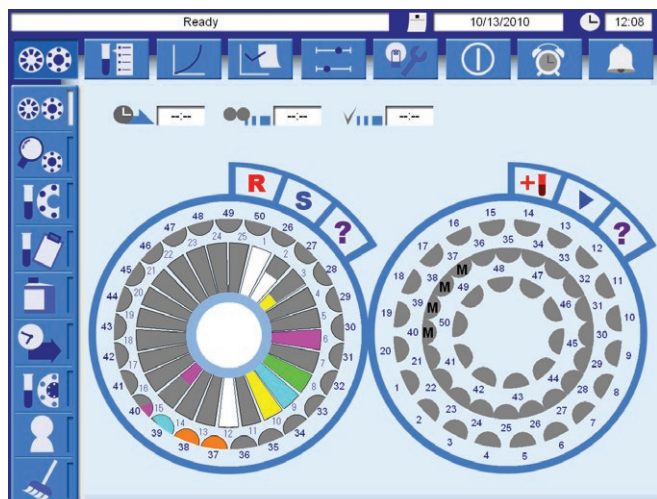
Liquid level, clot and crash detection. Capable of processing various sample types.

6 Integrated ISE module (optional)

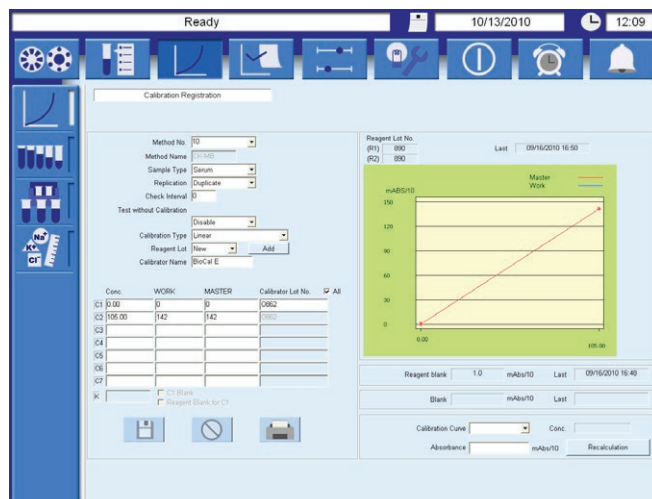
Direct measurement of K^+ , Na^+ and Cl^- in serum samples. Diluted measurement for urine samples.



- Run monitor
Remaining reagent volume and sample status are shown visually



- Calibration
Calibration settings and calibration curves are managed on one screen



Specifications

Type	Fully automated benchtop clinical chemistry analyzer (random access)
Measurement technology	Absorbance measurement (mono- and bi-chromatic) with 12 wavelengths: 340, 380, 415, 450, 510, 546, 570, 600, 660, 700, 750, 800 nm
Assay type	Endpoint, 2-point-end, rate (kinetic), 2-point-rate and ISE (optional)
Parameters	General chemistry and Immunology as photometric assay
Throughput	270 tests/hour (up to 450 tests/hour with optional ISE)
Data storage	Patient database: 1,000,000 tests / QC database: 50,000 tests / Calibration database: 25,000 tests
Display	External monitor
Interfaces	Ethernet
Dimensions	870 x 670 x 582 mm (WxDxH)
Weight	120 kg
Power Supply	100–120 VAC / 200–240 VAC; 650 VA
Operating environment	Temperature: +15°C to +30°C Relative humidity (non-condensing): 45% to 80%
Printer	External; Windows compatible printers
Barcode reader	Built-in (two: one for reagent and one for sample identification)
Protocols	ASTM
Features	<ul style="list-style-type: none"> – Optional direct ISE module for determination of Na⁺, K⁺, Cl⁻ ions – Removable sample tray with 40 positions plus 10 positions for controls and calibrators – Removable reagent tray with 50 positions (25 for 70 ml bottles and 25 for 20 ml bottles) – Reagent storage container cooled to +8°C to +15°C (extended reagent onboard stability) – Sampling volume: 1.5 to 35 µl (increment 0.1 µl) – Reagent sampling volume: R1: 20 to 350 µl, R2: 20 to 180 µl (increment 1.0 µl) – 72 semi-disposable resin cuvettes heated to +37°C (direct heating) – Optional high quality glass cuvettes (Pyrex) – Measurement volume: 100 to 350 µl – Sample types: Serum, Plasma, Urine and Others – STAT sample handling available – Automatic calculation of remaining reagent inventory volume – Operator and QC management – Customizable calibration and QC functions with reminder at designated time – Automated end-of-the-day and start-up functions including daily maintenance

BioLyzer® 300, Art.-No.: A93931 BioLyzer® 300 including ISE, Art.-No.: A93932

Distributor information



Analyticon Biotechnologies AG

Am Muehlenberg 10
35104 Lichtenfels - Germany
Phone: +49 6454 7991-0
info@analyticon-diagnostics.com
www.analyticon-diagnostics.com