

# CombiScreen® PLUS



- Initial screening for a wide range of diseases
- Ascorbic acid protection for glucose and blood
- Distinct color change in the clinically relevant range

**agile - affordable - accurate**

## Application of urine test strips

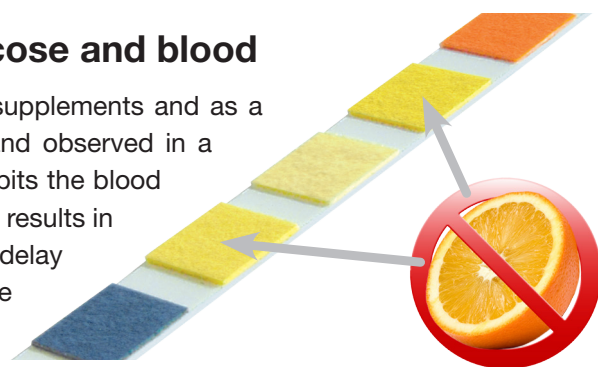
Urine test strips are easy-to-use, cost-effective and provide fast and reliable information on pathological changes in the organism. Urine test strips are intended to be used as a screening test for

- Kidney diseases and urinary tract infections
- Metabolic disorders like diabetes mellitus
- Liver and hemolytic diseases

Furthermore, they are often used to monitor the success of a prescribed therapy or to monitor the metabolic situation of diabetic patients.

## Excellent ascorbic acid protection for glucose and blood

Ascorbic acid (vitamin C) is ingested through foods, dietary supplements and as a preservative. Excess ascorbic acid is excreted in the urine and observed in a high proportion of the population. However, ascorbic acid inhibits the blood and glucose test pad reaction, which may cause false-negative results in the presence of hematuria or glucosuria and in consequence delay of necessary diagnostic or therapeutic measures. Therefore, the CombiScreen® PLUS urine test strips are equipped with an active protection of the glucose and blood test pad, which largely eliminates the interference with ascorbic acid. The classic CombiScreen® urine test strips do not include an ascorbic acid protection. However, a test pad indicates the level of ascorbic acid in the urine to provide a hint of possible interferences.



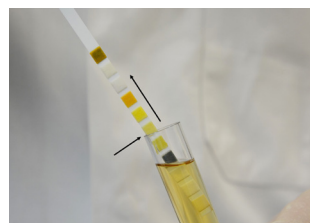
## Easy-to-use

The CombiScreen® urine test strips have a consistent reading time of 60 seconds (up to 120s for leucocytes). The long handle end prevents contact with the test pads, ensuring hygienic evaluation of the urine test strips. The aluminum vial sealed with a desiccant stopper protects the strips from light as well as humidity and allows one-hand operation.

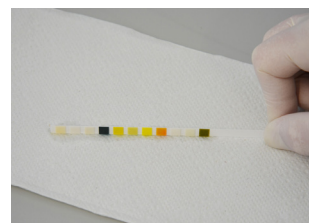
## Four simple steps to achieve a multi-parameter result



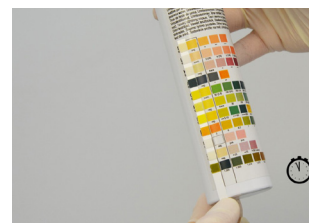
Collect the midstream specimen of urine (preferably morning urine). Dip the strip about 2 sec. Take care all pads are wet.



Wipe off excessive urine at the edge of the tube.

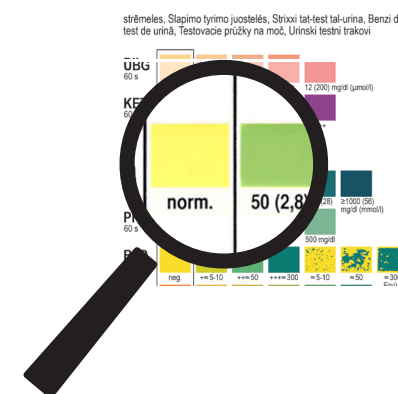


Dip the strip on a tissue and keep it horizontal.



Compare the color of the test pads with the label after 60 sec. (Leucocytes up to 120 sec.) Note the result.

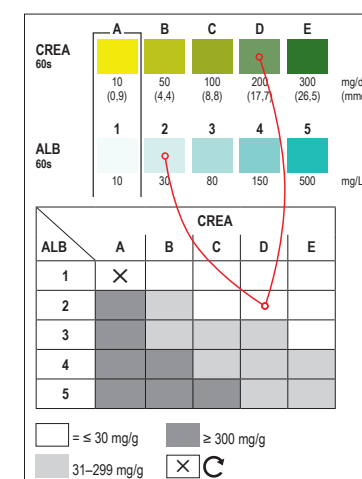
## Distinct color changes in the clinically relevant range



The clear color change in the clinically relevant area of the CombiScreen® urine test strip and the true-color printing of the tube labels make it easier to distinguish between normal and suspicious results. Furthermore, the high sensitivity of our test pads shows clinically significant results for each parameter even at low concentration levels (e.g. the glucose test pad will react already at 50 mg/dl).

## CombiScreen® mALB / CREA For determination of uACR in spontaneous urine

The strip is used for screening of microalbuminuria in people with chronic diseases such as diabetes mellitus or high blood pressure, who have an increased risk of developing a chronic kidney disease.



- The urine test strip is based on the evaluation of albumin-to-creatinine ratio in spontaneous voided urine samples, which eliminates the need of 24-hour sample collection.
- The albumin-to-creatinine ratio provides accurate information on albumin level in urine, regardless of the urine concentration.
- Fast and easy handling: The result can be read directly from the table on the label after 60 seconds. The evaluation can be done visually or on the Urilyzer® 100 Pro test strip analyzer.
- Increased sensitivity to albumin compared to the conventional protein test field, therefore suitable for the determination of uACR, e.g. to obtain an early indication of the possible presence of chronic kidney disease.



# combi<sup>®</sup> screen

PLUS – with ascorbic acid protection

Name	Art.-No.	Cont.	Parameter												
			Glucose	Ascorbic Acid	Ketones	Protein	pH-Value	Blood	Nitrite	Leucocytes	Spec. Gravity	Bilirubin	Urobilinogen	Creatinine	Albumin
<b>Glu Plus</b>	94501	50	■												
<b>Nitrit Plus</b>	94506	50							■						
<b>3 Plus</b>	94508 / 94108	50 / 100	■			■	■								
<b>5+N Plus</b>	94535 / 94135	50 / 100	■	■		■	■	■	■						
<b>5+Leuko Plus</b>	94517 / 94117	50 / 100	■			■		■	■	■			■		
<b>9 Plus</b>	94115	100	■	■	■	■	■	■	■			■	■		
<b>9+Leuko Plus</b>	94250 / 94200	50 / 100	■	■	■	■	■	■	■	■		■	■		
<b>10SL Plus</b>	94120	100	■		■	■	■	■	■	■	■	■	■		
<b>VET 11 Plus</b>	94100V	100	■	■	■	■	■	■	■	■	■	■	■		
<b>5SYS Plus<sup>1)</sup></b>	94109	100	■			■		■	■	■					
<b>7SYS Plus<sup>1)</sup></b>	94110 / 94110A	100 / 150	■		■	■	■	■	■	■					
<b>11SYS Plus<sup>2)</sup></b>	94100 / 94150	100 / 150	■	■	■	■	■	■	■	■	■	■	■		
<b>11Auto<sup>3)</sup></b>	95150	150	■	■	■	■	■	■	■	■	■	■	■		
<b>Auto ACR<sup>3)</sup></b>	95153	150	■	■	■	■	■	■	■	■		■	■	■	■
<b>mALB / CREA<sup>1)</sup></b>	94025	25												■	■
CombiScreen <sup>®</sup> classic line – without ascorbic acid protection															
<b>GP</b>	93104	100	■			■									
<b>GAK</b>	93107	100	■	■	■										
<b>GPK</b>	93105	100	■		■	■									
<b>10SL</b>	93120 / 93120A	100 / 150	■		■	■	■	■	■	■	■	■	■		
<b>11SYS<sup>2)</sup></b>	93100 / 93150	100 / 150	■	■	■	■	■	■	■	■	■	■	■		

<sup>1)</sup> System test strips to be used with Urialyzer<sup>®</sup> 100 Pro instruments

<sup>2)</sup> System test strips to be used with Urialyzer<sup>®</sup> 100/500 Pro instruments

<sup>3)</sup> System test strips to be used with Urialyzer<sup>®</sup> Auto instruments



## Quality control

Quality control	Pack size	Art.-No.
CombiScreen <sup>®</sup> Dip Check	2 x 15 ml	93010
CombiScreen <sup>®</sup> Drop Check	2 x 5 ml	93015

The controls consist of 2 ready-to-use solutions which enable the quality assurance covering the complete clinically relevant range.

## Analyzer

Urialyzer<sup>®</sup> 100 Pro  
120 tests/hour, semi automated  
Urialyzer<sup>®</sup> 500 Pro  
500 tests/hour, semi automated  
Urialyzer<sup>®</sup> Auto  
240 tests/hour, fully automated

Distributor information



## Analyticon Biotechnologies GmbH

Am Muehlenberg 10  
35104 Lichtenfels - Germany  
Phone +49 64 54 7991-0  
info@analyticon-diagnostics.com  
www.analyticon-diagnostics.com